

## TONIGHT'S DRESS REQUIREMENT

Elegant Casual: Jacket, no tie required for gentlemen; dress, skirt or trousers for ladies. No jeans or shorts. Please note that the dress code applies from 6.00pm this evening. Out of respect for your fellow guests, the dress code will be enforced. The Lido Restaurant provides an alternative for those guests who prefer a more relaxed evening attire.

## ALTERNATIVE LIDO DINING

Our alternative dining theme this evening will be Aztec offering authentic regional Mexican cuisine exploring the variety of spices and ingredients which are native to the country. Aztec will be located within the Lido Restaurant, deck 9, starboard side. Reservations can be made by dialling the Lido reservation line on 14315 between the hours of 7.00am and 5.00pm. Please note that a \$10.00 cover charge per person will apply. Contrary to some pre-voyage documentation, Cunard has introduced this charge from the Maiden Voyage on QUEEN ELIZABETH as mentioned in our brochure.

## LIDO BUFFET DINING

Tonights dinner buffet will be French themed.

## MASONIC GATHERING

There will be a fund raising Masonic Cocktail Party on the 5th November. Any of the Masonic Brethren wishing to attend please sign up at the Pursers Desk before 6.00pm this evening.

## SECURITY PRECAUTIONS

Cunard security precautions require all guests to produce their plastic ship identification key to the security officers on the gangway when embarking and disembarking. These requirements are in the interests of your own safety and security. Guests are advised that to minimise delays and inconvenience, it would be advantageous to limit the carrying of any personal items which may trigger metal detectors when re-boarding QUEEN ELIZABETH.

## CREW EMERGENCY DRILL

At 10.00am this morning, alarms will be sounded and broadcasts made as the crew are exercised in their Emergency Duties. During this exercise, limited passenger services will be provided. You are advised that part of the exercise involves checking guest staterooms to ensure that they have been evacuated. If you will be on board during the drill and prefer not to be disturbed, please display the "Privacy Please" notice prior to the start of the drill. Guests remaining on board are strongly encouraged to broaden their knowledge of maritime safety by watching the programme shown on channel 48 of your stateroom television at 10.00am. For the duration of the crew drill, we kindly request that guests please keep clear of the outside area of the boat Deck.

## LOST AND FOUND

If you have misplaced or found any items on board ship, please contact the Purser's Office by either dialling 33000 on your stateroom/suite phone, or by visiting the Purser's Desk.

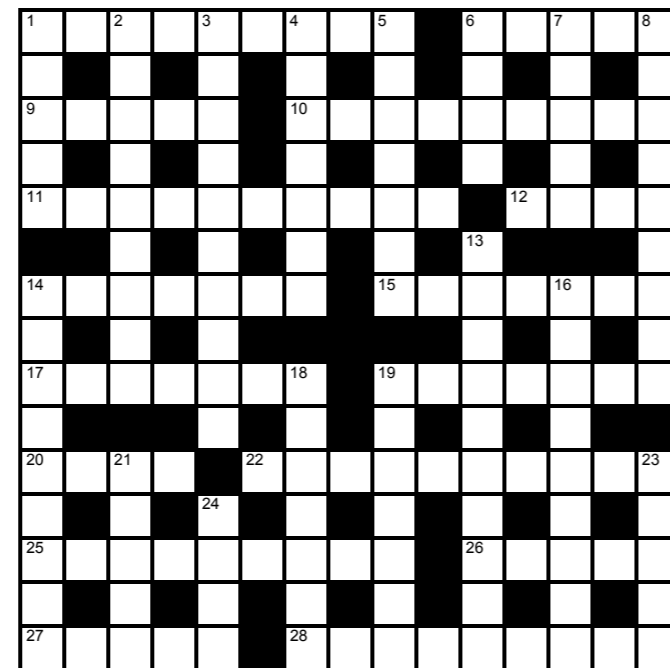
## SPANISH VAT (IVA)

Please note that when we call into ports in mainland Spain and the Balearic Islands, select dining cover charges and all items purchased from the bars whilst we are in port, including wine with meals, will be subject to Spanish value added tax\* at the rate of 7%. Our prices are displayed exclusive of this tax which will be charged in addition and will be itemised on your receipt.

## MEDICAL CLINIC - TODAY'S OPENING HOURS

Morning Clinic: 8.00am to 10.00am / Evening Clinic: 4.30pm to 6.30pm  
For medical emergencies outside of these hours, please call 999 or 911.

## TODAY'S CROSSWORD



### Across

- 1 Bought (9)
- 6 Belonging to you (5)
- 9 Items which may be sold singly (5)
- 10 Keeping an eye on (9)
- 11 Entertainers (10)
- 12 Enables the leg to bend (4)
- 14 You broadcast from here (7)
- 15 Give pleasure to (7)
- 17 Use cautiously (7)
- 19 Cosseted (7)
- 20 Squashed circle (4)
- 22 Those responsible for running a business (10)
- 25 Raring to go (9)
- 26 Mammal's outer layer (5)
- 27 Environmental (5)
- 28 Some things not expected (9)

### Down

- 1 On the tubby side (5)
- 2 Compels by threats (9)
- 3 Belonging to the past (10)
- 4 Frozen effigies (7)
- 5 Coveted (7)
- 6 Tale (4)
- 7 Joining together (5)
- 8 Dropped a hint (9)
- 13 With everything included (10)
- 14 Education (9)
- 16 Long narrow rooms (9)
- 18 Underpants (7)
- 19 Haphazard distribution (7)
- 21 Eve's downfall (5)
- 23 Examinations (5)
- 24 Make senseless with a blow (4)

### Answers to yesterday's crossword

**Across:** 1 Confusion, 6 Litre, 9 Section, 10 Ignored, 11 Obeyed, 12 Thousand, 14 Also, 15 Throughout, 18 Travellers, 20 Palm, 23 Dirtiest, 24 Potato, 26 Develop, 27 Grandma, 28 Tides, 29 Yesterday.  
**Down:** 1 Cosmonaut, 2 Nucleus, 3 United, 4 Isn't, 5 Neighbours, 6 Language, 7 Tornado, 8 Ended, 13 Philosophy, 16 Temporary, 17 Vehicles, 19 Arrived, 21 Awarded, 22 Locate, 23 Didn't, 25 Ages.

4 November, 2010

Clear - 70°F / 21°C

In Gibraltar: Cloudy - 68°F / 20°C

Tonight's Dress Code: Elegant Casual

# BIENVENIDOS A CARTAGENA, ESPAÑA

## FROM THE NAVIGATOR



Once clear of the Balearic Islands QUEEN ELIZABETH rounded Cape Palos and continued westwards towards Cartagena. We set a final northerly course to make our approaches into the harbour, at which point the Castles of

San Julian and Galeras could be seen on the mountains to port and starboard.

Cartagena has been the capital of the Spanish Navy's Maritime Department of the Mediterranean since the arrival of the Spanish Bourbons in the 18th century. As far back as the 16th century it was one of the most important naval ports in Spain, together with Ferrol in the North.

## SUNRISE AND SUNSET

Sunrise: 7.33am/ Sunset: 6.02pm;  
GMT+1

## NAUTICAL FACT OF THE DAY

### STABILIZERS

The devices which help the ship to be as steady as possible are the ship's stabilizers. These devices are incorporated in the construction of a ship to dampen down rolling in a seaway in order to provide a steadier and more comfortable passage through the sea. Gyro-operated stabilizers in large ships are retractable into compartments inside the hull below the waterline, and are thus stowed while the ship is in narrow waters, in port or when the sea conditions are calm.



## CARTAGENA

### SPAIN

ARRIVAL TIME: 9.00am

ALL ABOARD: 5.45pm



Cartagena is a Mediterranean city and naval station located in the Region of Murcia, southeastern Spain. It was the first of a number of cities which eventually were called Cartagena. Thanks to its strategic position on the Mediterranean, Cartagena has been inhabited by many different cultures which have left their mark on its rich cultural heritage during a glorious and turbulent history. Although there are some ruins from the Carthaginian ages, like the remains of the Punic rampart (built in 227 BC with the foundation of the city), most of its oldest monuments date from the ages of the Roman Empire when Cartagena flourished.

## TONIGHT'S FEATURED ENTERTAINMENT



## JOHN MARTIN COMEDIAN

John Martin's outstanding talent is comedy both as a performer and a writer. He is the World Record Holder for non-stop joke telling (101 hours and 39 minutes). On last year's Parkinson show, Ken Dodd said John was his favourite comedian.

**8.30pm and 10.30pm**  
Royal Court Theatre, Decks 1, 2 & 3

## SERIOUS SOUNDS IN THE GARDEN LOUNGE

Enjoy music by International Band Serious Sounds under the stars in The Garden Lounge.

**9.45pm, The Garden Lounge, Deck 9**

## KARAOKE

Throw your inhibitions overboard and sing your favourite karaoke classics.

**11.00pm, Golden Lion, Deck 2 Forward**

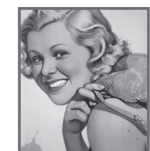
## In Today's

**DISCOVER...**  
...top things you must experience before you go

A Journey  
Through Theatrical  
Toil And Pride



Complete  
The  
Picture



Own A Little  
Piece Of  
History

## OFFICER PROFILE - CHIEF PURSER:

### JONATHAN LEAVOR

Jonathan, born the son of a dentist in Bradford, West Yorkshire, England, hardly had the background for a career at sea. However, having studied for a degree in Hotel Management for 4 years (which included a period of time working in the top London hotel – Claridge's); along with a wanderlust for travel, sailing the 7 seas seemed an ideal option.



After leaving college, Cunard was first choice having attended a Cunard Sales presentation at a local hotel some years earlier. Jonathan joined Cunard and QE2 in August 1984 as a trainee waiter, working his way through the ranks covering most positions within the hotel side of the operation and became Chief Purser in 1997.

In early 2003, Jonathan was asked to assist in the set up of QUEEN MARY 2 where he remained for the last 7 years. He returned to QE2 two times since for short periods to "help out" as well as doing several contracts on QUEEN VICTORIA in 2008.

Jonathan was delighted to be asked to bring out the latest Cunarder, QUEEN ELIZABETH and proud to have served on 4 Queens during nearly 27 years service.

Married to Lucy with 3 children, who often travel with him at various times during the year, Jonathan still lives in Bradford and enjoys domestic life, gardening and travel when time permits.

## NATIONALITIES

With glamorous associations and a litany of regal and famous guests, Cunard has an international appeal, as indicated by the diverse range of guests travelling with us this voyage (listed below). In addition to the below guest nationalities, we also have more than 50 nationalities amongst the ships company.

Argentina	2	Nigeria	8
Australia	158	Russia	2
Austria	4	Singapore	5
Brazil	1	South Africa	4
Canada	35	Spain	1
France	9	Switzerland	2
Germany	53	United Kingdom	1399
Hungary	1	United States	189
Ireland	10	Venezuela	1
Italy	6		
Japan	78	<b>Total Females</b>	<b>1056</b>
Latvia	1	<b>Total Males</b>	<b>928</b>
New Zealand	5	<b>Total</b>	<b>1984</b>

## USEFUL PHRASES - WHILST ASHORE

Hello	Hola
How much?	Cuánto?
Goodbye	Adiós
Yes	Sí
Please	Por favor
No	No
Thank you	Muchas Gracias

## FOR THOSE GUESTS ON TOUR

The following tours will meet on board, in the below mentioned public rooms. Please check-in with the Tour Staff. We kindly request that you do not come to the meeting room until you are ready to depart, and only at the times specified below. You will be proceeding directly from the meeting room to the motor coaches. Kindly remove your tour tickets from inside the envelope and have them ready to show the Tour Staff at check in.

TIME	TOUR CODE AND NAME	LOCATION
9.15am	CGN-004A: Alicante on Your Own	Queens Room
9.15am	CGN-007A: Elche	Queens Room
9.30am	CGN-003A: Lovely Lorca	Queens Room
9.45am	CGN-001A: Complete Cartagena	Queens Room

The following tour will meet in the **Royal Court Theatre, Deck 2 Starboard** side entrance only.

9.15am	CGN-002A: A Tale of Two Cities	Royal Court Theatre
--------	--------------------------------	---------------------

Please note: Bottles of water will be available to purchase in the Queens Room during morning tour dispatch.

## FROM THE PURSER'S DESK

### SHIP'S AGENT

AGENCIA MARITIMA BLAZQUES S.A.

Plaza del Ayuntamiento N°2 ENTLO

Cartagena 30202 Spain

Telephone: +34 968500800

For emergencies while ashore.

### CURRENCY

Legal tender in Cartagena is the Euro.

Foreign Exchange is available from the Purser's Office located on Deck 1, Grand Lobby.

\$1.00 USD equals approx. €0.79 Euro (buy) / €0.67 Euro (sell)

Please Note: these rates are approximate.

### POSTAGE

Postcards and letters can be posted via the Purser's Desk.

Stamps are also available but subject to availability.

### 6.00am "THE MORNING SHOW"

The Morning TV Show with Entertainment Director Alastair Greener and guests. Running continuously until 12.00pm.

**TV Channel 22**

### 6.00am CUNARD INSIGHTS

An opportunity to see former Conservative Leader and Home Secretary, Lord Michael Howard's lecture - 'Three Weeks that Changed the World; Churchill's first three weeks as Prime Minister'. Runs continuously throughout the day.

**Stateroom TV Channel 38**

### 7.30am SUNRISE STRETCH

Please see the Discover... insert for a full listing of all the health and fitness classes available today.

**Royal Spa Gymnasium, A Stairway (until 8.00am)**

### 9.00am ARRIVAL

QUEEN ELIZABETH arrives in at Alfonso XII, No C002, starboard side.

### 9.00am CROSSWORD AVAILABLE

Available during opening hours.

**Library, Decks 2 & 3**

<b>10 am</b>	<b>10.00am CREW BOAT AND RAFT DRILL</b> While this in no way affects guests directly, some ship's services and activities will be curtailed. Thank you for your understanding. <b>Throughout the Ship (duration approximately 1 hour)</b>
	<b>10.00am GATHERING FOR SOLO TRAVELLERS</b> Meet at the Golden Lion to plan your time ashore. <b>Golden Lion, Deck 2 Forward (unhosted)</b>
	<b>11.00am SOCIAL DECK QUILTS</b> <b>Deck 10, Portside Forward (unhosted)</b>
<b>11 am</b>	<b>11.30am QUIZZICAL CORNER</b> <b>Golden Lion, Deck 2 Forward (until 12.15pm)</b>
	<b>2.00pm SOCIAL CROQUET GATHERING</b> <b>Games Deck, Deck 11 Forward (unhosted)</b>
<b>2 pm</b>	<b>2.00pm SOCIAL BRIDGE GATHERING</b> <b>Card Room, Deck 3 Midship</b>
	<b>2.15pm SOCIAL CRIBBAGE GATHERING</b> <b>Card Room, Deck 3 Midship</b>
	<b>3.00pm FRIENDS OF BILL W</b> <b>Admirals Lounge, Deck 10 Forward</b>
	<b>3.00pm CROSSWORD AVAILABLE</b> Available during opening hours. <b>Library, Decks 2 &amp; 3</b>
<b>3 pm</b>	<b>3.00pm SOCIAL TABLE TENNIS GATHERING</b> <b>Deck 10 Midship, Portside (unhosted)</b>
	<b>4.15pm WIPEOUT TRIVIA</b> <b>Golden Lion, Deck 2 (until 5.00pm)</b>
<b>4 pm</b>	<b>4.30pm SEMINAR: eBay</b> <b>Connexions 1, Deck 1 Midship (until 5.00pm)</b>
	<b>4.30pm SHORT MAT BOWLS TOURNAMENT</b> <b>Games Deck, Deck 11 Forward (until 5.30pm)</b>
	<b>5.00pm FRIENDS OF DOROTHY</b> <b>Commodore Club, Port Side Deck 10</b>
	<b>5.15pm CATHOLIC HOLY MASS</b> <b>Connexions 2&amp;3, Deck 3 (until 6.00pm)</b>
	<b>5.15pm PIANIST CARLO NUSCHI</b> <b>Grand Lobby, Deck 1 Midship (until 6.15pm)</b>
<b>5 pm</b>	<b>5.30pm SAIL AWAY PARTY</b> Join fellow guests and your Entertainment Staff on the open decks with music supplied by Serious Sounds. If we encounter inclement weather, the live music will be in The Garden Lounge. <b>Lido Pool Area, Deck 9 Aft</b>
	<b>5.45pm ALL ABOARD</b> The gangway will be raised and shortly afterwards QUEEN ELIZABETH will sail for Gibraltar, a distance of 242.2 nautical miles.
	<b>7.00pm HARPIST FIONA MCGEE</b> <b>Grand Lobby, Deck 1 Midship (until 7.45pm)</b>
	<b>7.30pm PIANIST GRAHAM WELLARD</b> <b>Commodore Club, Deck 10 Forward (until 8.15pm)</b>
<b>7 pm</b>	<b>7.45pm PIANIST CARLO NUSCHI</b> <b>Grand Lobby, Deck 1 Midship (until 8.30pm)</b>
	<b>7.45pm PIANIST SIMON JOHN</b> <b>Golden Lion, Deck 2 Forward (until 8.30pm)</b>

<b>7 pm cont.</b>	<b>7.45pm BALLROOM AND LATIN DANCING</b> Dancing to the Queens Room Orchestra, directed by Trevor Newby. <b>Queens Room, Deck 2 Midship (until 8.30pm)</b>
<b>8 pm</b>	<b>8.30pm COMEDIAN JOHN MARTIN</b> John Martin's outstanding talent is comedy both as a performer and a writer. He is the World Record Holder for non-stop joke telling (101 hours and 39 minutes). Accompanied by the Royal Court Theatre Orchestra, under the musical direction of Tim Fulker. Until 9.15pm, repeated at 10.30pm. ? <b>Royal Court Theatre, Decks 1, 2 &amp; 3 Forward</b>
	<b>9.30pm DJ GRAHAM CRACKER</b> Party the night away in the most stunning night club at sea. <b>The Yacht Club, Deck 10 Forward (until late)</b>
	<b>9.30pm BALLROOM AND LATIN DANCING</b> Dancing to the Queens Room Orchestra, directed by Trevor Newby and featuring Michel Chartier as vocalist. <b>Queens Room, Deck 2 Midship (until late)</b>
<b>9 pm</b>	<b>9.30pm HARPIST FIONA MCGEE</b> <b>Grand Lobby, Deck 1 Midship (until 10.30pm)</b>
	<b>9.30pm PIANIST GRAHAM WELLARD</b> <b>Commodore Club, Deck 10 Forward (until late)</b>
	<b>9.30pm PIANIST SIMON JOHN</b> <b>Golden Lion, Deck 2 Forward (until 9.45pm)</b>
	<b>9.45pm SERIOUS SOUNDS UNDER THE STARS</b> Enjoy music by International Band Serious Sounds under the stars in The Garden Lounge. <b>The Garden Lounge, Deck 9 Midship (until late)</b>
	<b>9.45pm NAME THAT TUNE TRIVIA</b> Put your musical knowledge to the test with the Entertainment Staff. <b>Golden Lion, Deck 2 Forward (until 10.30pm)</b>
	<b>10.30pm PIANIST CARLO NUSCHI</b> <b>Midships Bar, Deck 3 Midship (until 11.15pm)</b>
	<b>10.30pm COMEDIAN JOHN MARTIN</b> John Martin's outstanding talent is comedy both as a performer and a writer. He is the World Record Holder for non-stop joke telling (101 hours and 39 minutes). Accompanied by the Royal Court Theatre Orchestra, under the musical direction of Tim Fulker. Until 11.15pm, repeated from 8.30pm. ? <b>Royal Court Theatre, Decks 1, 2 &amp; 3 Forward</b>
<b>10 pm</b>	<b>10.30pm PUB SING ALONG WITH SIMON JOHN</b> <b>Golden Lion, Deck 2 Forward (until 11.00pm)</b>
	<b>11.00pm KARAOKE</b> Throw your inhibitions overboard and sing your favourite karaoke classics. <b>Golden Lion, Deck 2 Forward (until late)</b>
	<b>11.15pm SUNRISE STRING QUARTET</b> <b>Grand Lobby, Deck 1 Midship (until late)</b>
<b>11 pm</b>	<b>11.30pm BALLROOM AND LATIN DANCING</b> Dancing continues in the Queens Room until late. <b>Queens Room, Deck 2 Midship (until late)</b>
	<b>11.30pm ALL REQUEST NIGHT</b> With DJ Graham Cracker. If he has it, he'll play it. <b>The Yacht Club, Deck 10 Forward (until 12.00am)</b>